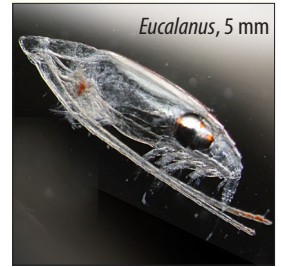
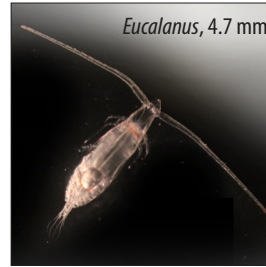
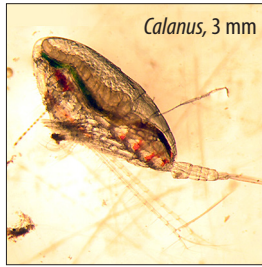
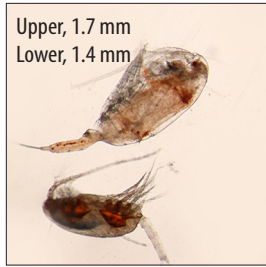


Marine Zooplankton of Puget Sound

This identification card includes most groups of marine zooplankton found in Puget Sound. Size ranges provided are approximate - some specimens may be outside of the stated ranges. Exact measurements for specimens in photos are provided where available.



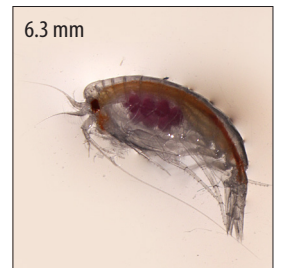
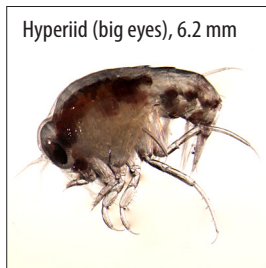
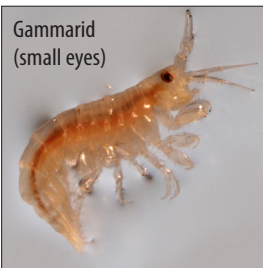
Copepods 0.5-5 mm



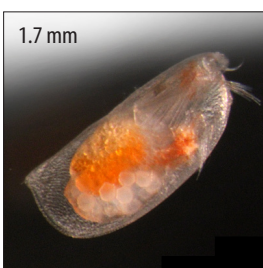
Cladocerans (water fleas) ~1 mm



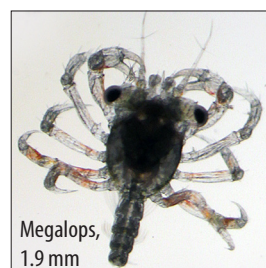
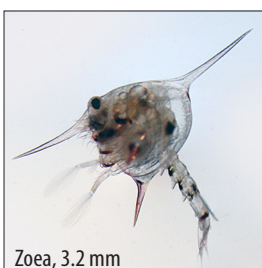
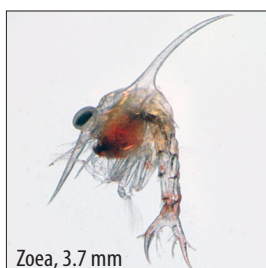
Amphipods 0.5-2 mm



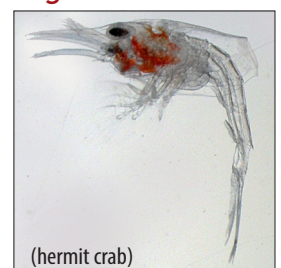
Ostracods 0.5-2 mm



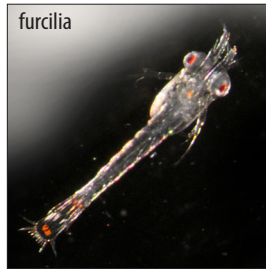
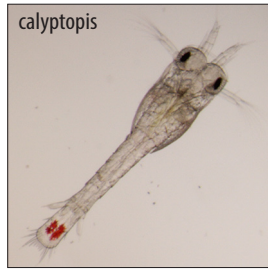
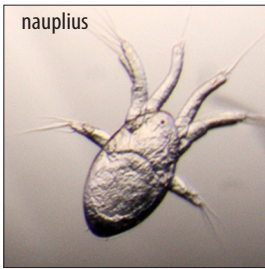
Crab larvae 2-5 mm



Pagurus larvae 1-4 mm

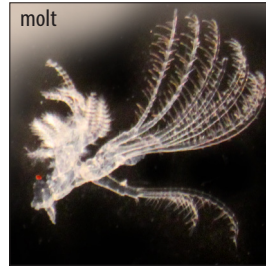
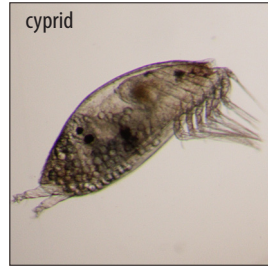
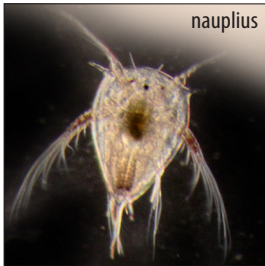


Euphausiids (krill) nauplius ~ 0.5 mm; calyptopis 0.5 mm-1.5 mm; furcilia 2-5 mm; adults 8-15 mm



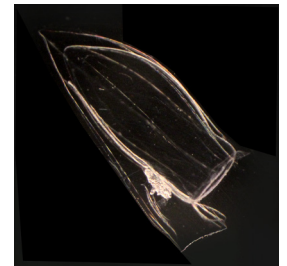
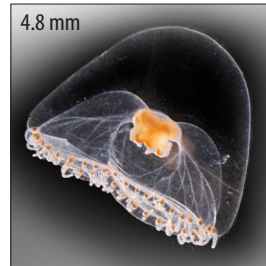
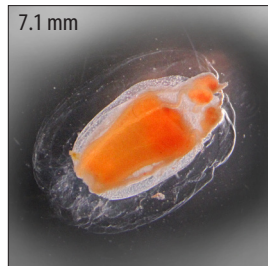
All photos by Audrey Djunaedi, except *Calanus* provided by Julie Keister; larvacean provided by NOAA Photo Library; fish larva provided by Sarah Norberg, NWFSC, NOAA. Special thanks to Julie Keister and Audrey Djunaedi for advising on content and providing size information.

Barnacles (larvae and adult molt) larvae 0.5-1 mm; molt size varies



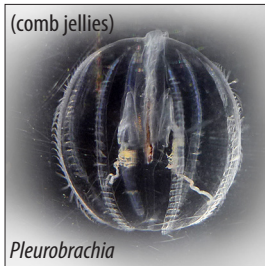
Washington Sea Grant
University of Washington
3716 Brooklyn Avenue NE
Seattle, WA 98105-6716
206.543.6600
WSG-AS 13-07
www.wsg.washington.edu

Jellies

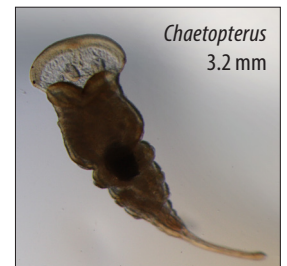
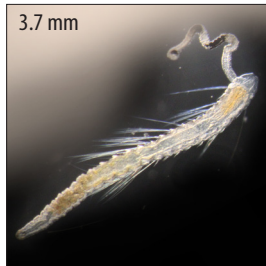


Siphonophores 4-8+ mm

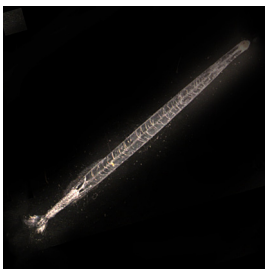
Ctenophores



Polychaete worms 1 mm-50 cm



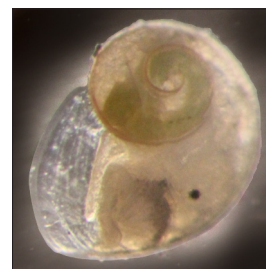
Chaetognaths (arrow worms) 3-40 mm



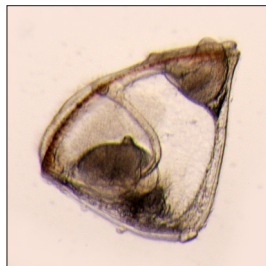
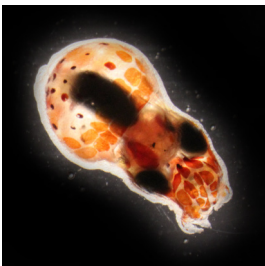
Pteropods 0.1-3 mm



Gastropod larvae 0.1-0.8 mm



Octopus larvae 3-10 mm **Cyphonautes** height ~0.6 mm



Larvaceans 2-4 mm



Fish larvae

