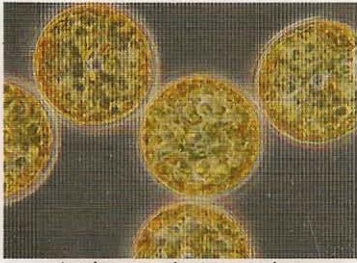
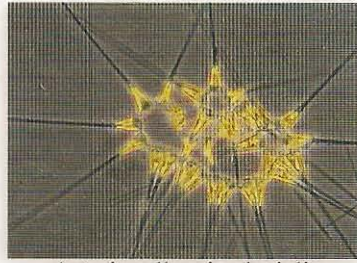


Marine Phytoplankton of Puget Sound

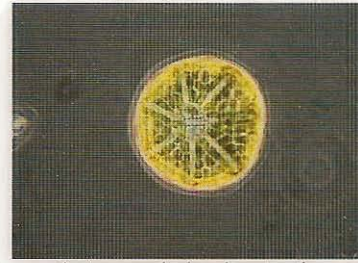
DIATOMS



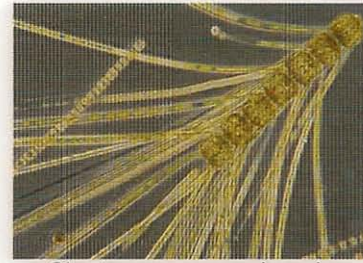
Actinoptychus senarius
cells 20-150 μm in diameter



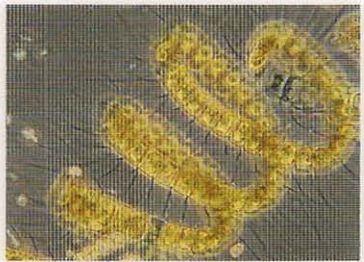
Asterionellopsis glacialis
cells 30-150 μm long



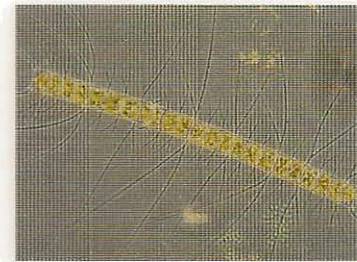
Asteromphalus heptactis
cells 42-125 μm in diameter



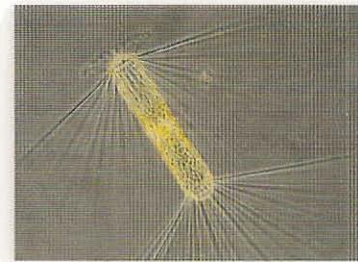
Chaetoceros concavicornis
cells 12-30 μm wide



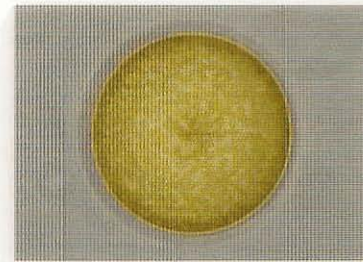
Chaetoceros debilis
cells 8-40 μm wide



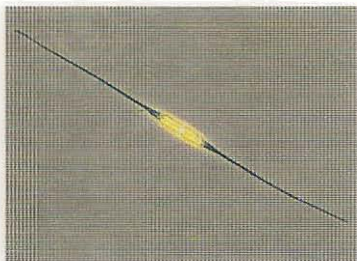
Chaetoceros decipiens
cells 9-84 μm wide



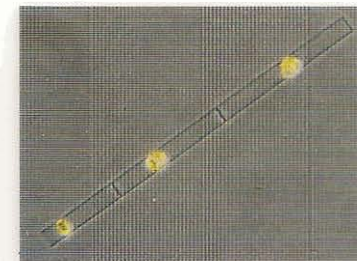
Corethron hystrix
cells 20-150 μm long



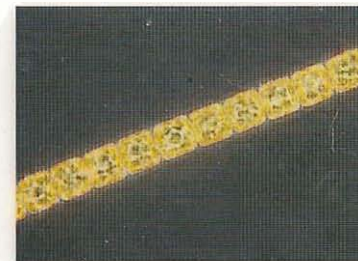
Coscinodiscus centralis
cells 100-300 μm in diameter



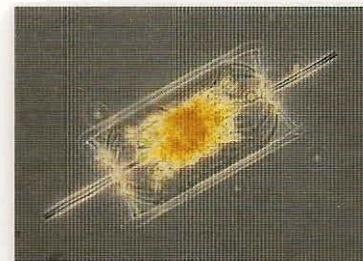
Cylindrotheca closterium
cells 30-400 μm long



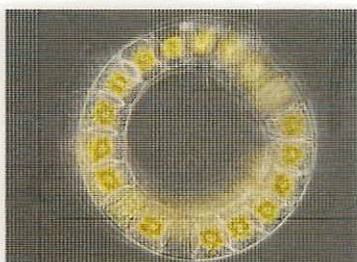
Dactyliosolen blavyanus
cells 6-38 μm in diameter



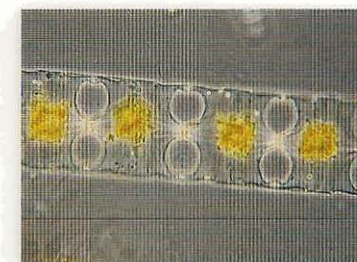
Detonula pumila
cells 16-42 μm in diameter



Ditylum brightwellii
cells 80-130 μm long



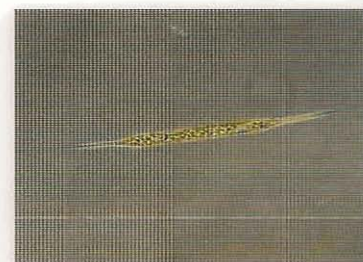
Eucampia zodiacus
cells 10-61 μm wide



Odontella longicurris
cells 15-110 μm wide



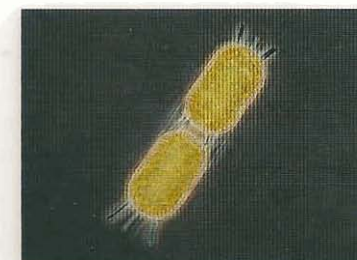
Pseudo-nitzschia pungens
cells 74-174 μm long



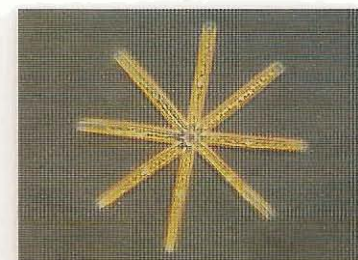
Rhizosolenia setigera
cells 4-20 μm in diameter



Skeletonema costatum
cells 2-21 μm in diameter



Stephanopyxis nipponica
cells 24-36 μm in diameter



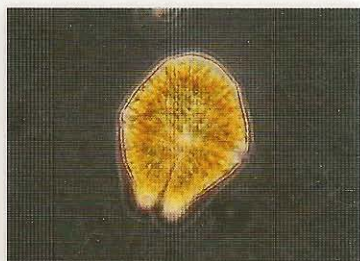
Thalassionema nitzschioides
cells 10-80 μm long



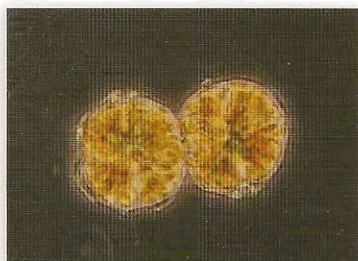
Thalassiosira spp.
cells 10-50 μm in diameter

Marine Phytoplankton of Puget Sound

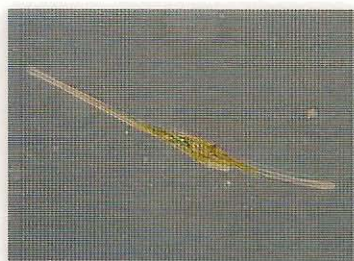
Dinoflagellates



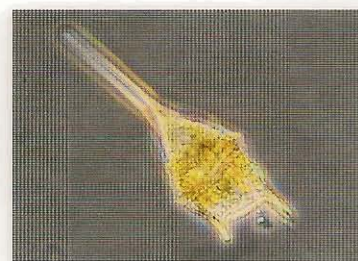
Akashiwo sanguinea
cells 40-80 μm long



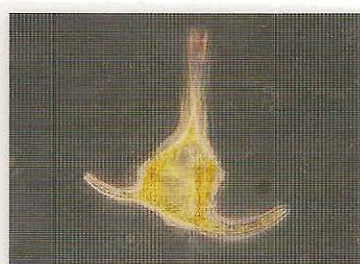
Alexandrium catenella
cells 24-34 μm long



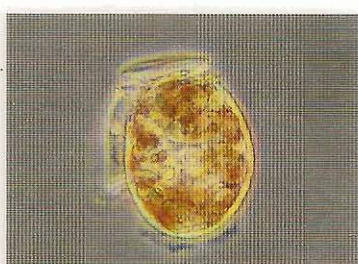
Ceratium fusus
cells 20-300 μm long



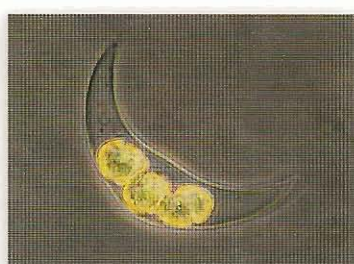
Ceratium lineatum
cells 30-60 μm long



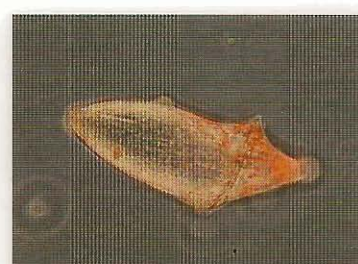
Ceratium tripos
cells 70-90 μm long



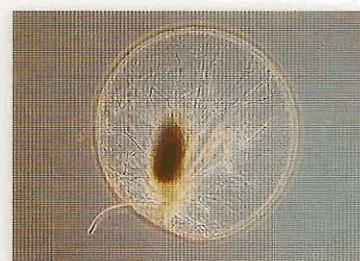
Dinophysis acuminata
cells 38-50 μm long



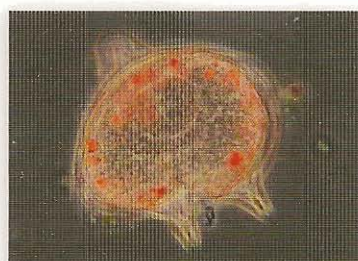
Dissodinium pseudolunula
cells 23-28 μm long



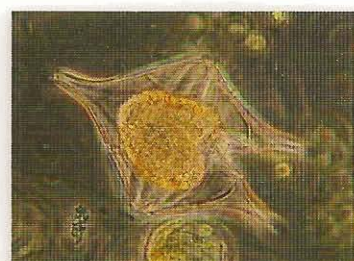
Gymnodinium rubrum
cells 100-145 μm long



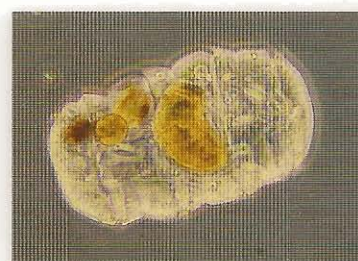
Noctiluca scintillans
cells 200-2,000 μm in diameter



Protoperidinium depressum
cells 116-200 μm long



Protoperidinium oceanicum
cells 220-300 μm long

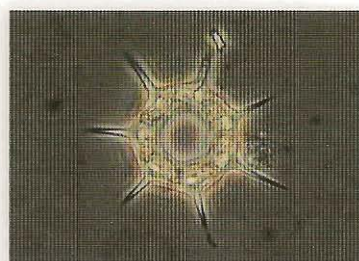


Polykrikos schwartzii
cells 100-150 μm long

Silicoflagellates



Dictyocha fibula
cells 10-45 μm in diameter



Dictyocha speculum
cells 19-34 μm in diameter